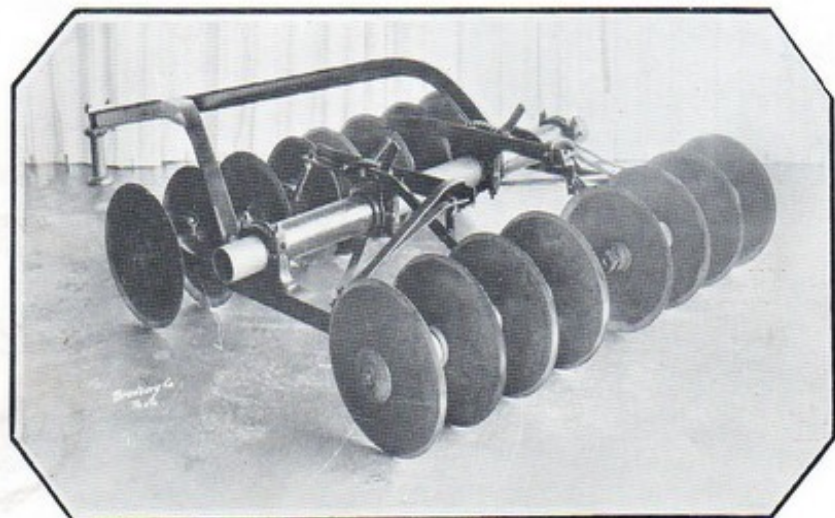

THE ACCEPTED ORCHARD DISC

LINDEMAN

EXTENSION TRACTOR DISC HARROW



CLOSED WITH BLADES STRAIGHT

When set this way the disc can be used for open field work, or in the orchard where limbs are high enough to allow driving the tractor close to the trees.

Simple — Sturdy — Economical



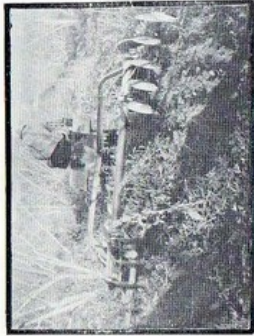
Manufactured by

LINDEMAN POWER EQUIPMENT CO.

YAKIMA,

WASHINGTON

Tested for Six Years in Hundreds of Orchards



The Lindeman Orchard Disc in heavy cover crop. The arrangement of blades and frame is such that the disc has simple suction and cuts through heavy cover without weighting.

LINDEMAN EXTENSION TRACTOR DISC

For more than six years Lindeman Extension Tractor Discs have been gaining a reputation in Northwest orchards. Hundreds of them are in use—not a one has ever been junked. They are built so strong and their construction is so simple that with a reasonable attention to lubrication and bearings they will last indefinitely.

Cutting Under Low Hanging Limbs in a Peach Orchard

Note that the tractor operator is obliged to lean to one side to avoid the tree limbs, but the extended disc cuts deep and clean clear up to the tree row.

The adjustment of the angle of blades causes the discs to cut through cover crop without extra weighting.

Simple Adjustments

Loosening set screws which hold collars on the connecting pipe allows the frame to be spread for wide cutting. To set back to closed position simply loosen the screws again, set collars in and pull the disc ahead with the tractor. The sections will slide toward the center.

Trouble-free Mechanism

Construction of the disc is as simple and strong as possible. The frame is all steel, castings are steel, bearings are ample, and all bolts are set with lock washers.



EXTENDED WITH BLADES ANGLED FOR CUTTING
The blades are angled as shown. When closed, the frames are simply moved outward on the pipe.

BUILT FOR YEARS OF SERVICE

Like all Lindeman implements the Tractor Orchard Disc is of the simplest possible design, with great excess strength in all working parts.

All frame parts are rolled, forged or cast steel and are guaranteed against breaking for the life of the disc.



SPECIFICATIONS

Blades, 9 gauge 18 inch La Belle heat treated. (Can be furnished in 20 inch if desired).

Axles, 1 5/32 inch special steel with deep U.S. S. thread.

Main frame, 2 1/2 x 2 1/2 x 3/8 steel angle.

Draw bars, 3 inch I-beam.

Connecting pipe, 3 1/2 inch I. D.

Grease Cup or Alemite Lubrication.

SIZES

6 foot, 16 blades, weight 850 lbs. Price.....

7 1/2 foot, 20 blades, weight 900 lbs. Price.....

Equipped with 18 inch blades. For 20 inch blades, add 50c per blade.

Prices F. O. B. Yakima

Convertible to Larger Size

The same frame is used in all sizes, so a 6 foot disc may be converted into a 7 1/2 foot by removing the 6 foot axles and inserting 7 foot axles with another spool and disc on each end, or the sizes may be reduced.

The LINDEMAN Line of Cost-Cutters

Besides the Tractor Orchard Disc, the Lindeman line of Orchard cost-cutters includes the following tractor implements:

Mobile Sprayer

Off-set Disc

Disc Plow

Brush Rake

Subsoiler

Disc Ditcher

Descriptive folders about any of these implements furnished on request

LINDEMAN POWER EQUIPMENT CO.

Factory and Offices, Yakima, Washington

Branches, Wenatchee, Washington
Ellensburg,

